

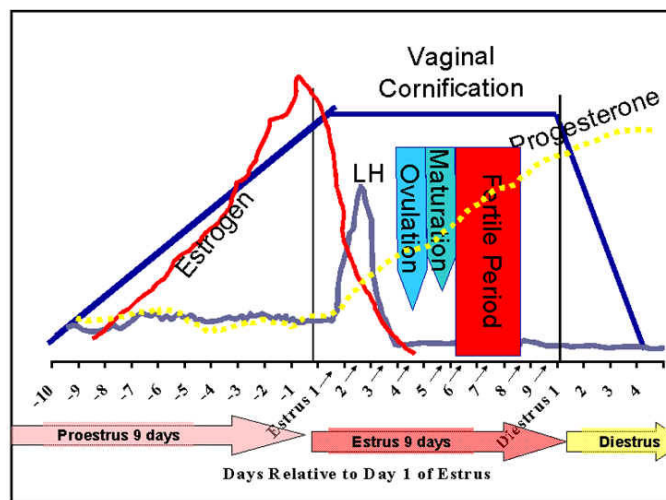
Fertile-Focus Ovulation Predictor



Fertile-Focus is the *affordable* high-quality saliva-based fertility test that allows you to predict ovulation with 98% accuracy - days in advance!

When a bitch is about to **ovulate**, a distinct crystal "**ferning**" pattern becomes present in her dried saliva due to hormonal changes causing the electrolytes (or salts) to increase in her body fluids. This **ferning coincides** with the rise in **Estrogen** that precedes the **Luteinizing Hormone (LH) Surge** by about 2 days and precedes Ovulation by roughly 4 days. (See diagram below)

Therefore, the ferning is first seen up to 4 days before ovulation in canines and can continue for two-three days after ovulation. Once ovulation occurs it takes the released ova from 2 to 2 ½ days to ripen. The ova are then fertile for the balance of five days from ovulation.



LSU School of Veterinary Medicine
Image is Copyright © 2006. All Rights Reserved Louisiana State University

Fertile-Focus offers:

- ④ **Quality:** A metal body & high-quality lens = *unlimited tests*.
- ④ **Clarity:** A powerful **50X** magnification ocular lens complete with an onboard light source.
- ④ **Affordability:** Other brands of saliva fertility tests offer lesser quality at twice the cost!
- ④ **Cost Savings:**
 - **Natural Breedings** ... Use to pinpoint ovulation with no need for expensive laboratory tests
 - **AI with Fresh Chilled/Frozen Semen:** Reduce the number of progesterone tests, required to pinpoint ovulation, by starting progesterone testing after ferning is seen.

To order Fertile Focus or for more information please contact us at **QuinnCarlin Distributors Ltd.,**
Phone: 866-MID-WOOF, www.midwoof.com, info@midwoof.com

Using Fertile-Focus Ovation Microscope

With Fertile-Focus, **PULL** the lens from the tube and just add a drop of saliva, collected in the morning before food or water. Let the sample dry for five to thirty minutes. You can use a hair dryer to speed the drying process in humid climates.

Step One 1
Carefully remove the lens by pulling it out of the casing. **Pull the lens - do not unscrew.**



Step Two 2
Place a drop of saliva on the surface of the lens. Try to avoid creating air bubbles.



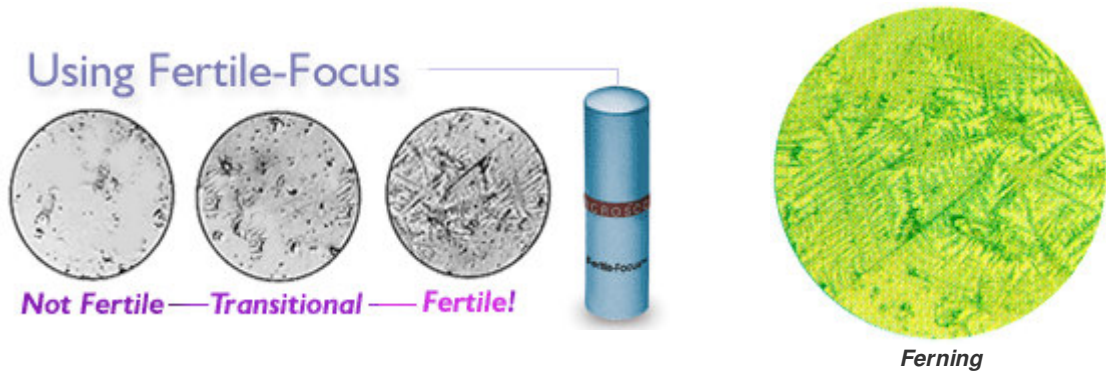
Step Three 3
Allow the saliva sample to dry for at least five, or as long as thirty, minutes and replace the lens into the body of the microscope.



Step Four 4
Look into the lens and push the light button to observe the test result. To focus, rotate the lens while bringing it close to the eye.



Once the sample is completely dry you can view the sample through the microscope. Press the LED light button and focus by turning the eyepiece of the microscope. If your bitch is near ovulation - a ferning, crystal-like pattern can be viewed. **NOTE:** Test first thing in the morning using a sublingual saliva sample (fresh from below the tongue). Do **not** test after eating, drinking, or brushing teeth. Ovoid bubbles in sample. Ensure that the sample is totally dry before testing.



- ▶▶ **Not Fertile:** Simple dot patterns and lines indicate no ovulation; your bitch is not fertile at this time.
- ▶▶ **Transitional:** Small ferning patterns – or crystal forms - appear among the spots and lines. Ovulation may occur in three to four days.
- ▶▶ **Fertile:** Strong ferning – or crystal – patterns dominate the sample. Ferning starts approximately three days before ovulation and will continue for two to three days after ovulation.

Cleaning Fertile-Focus

Clean your Fertile-Focus lens with a soft cloth such as those used to clean eye glasses. Do not use harsh cleaners.

To order Fertile Focus or for more information please contact us at **QuinnCarlin Distributors Ltd.,**
Phone: 866-MID-WOOF, www.midwoof.com, info@midwoof.com